



JetAdvice Manager

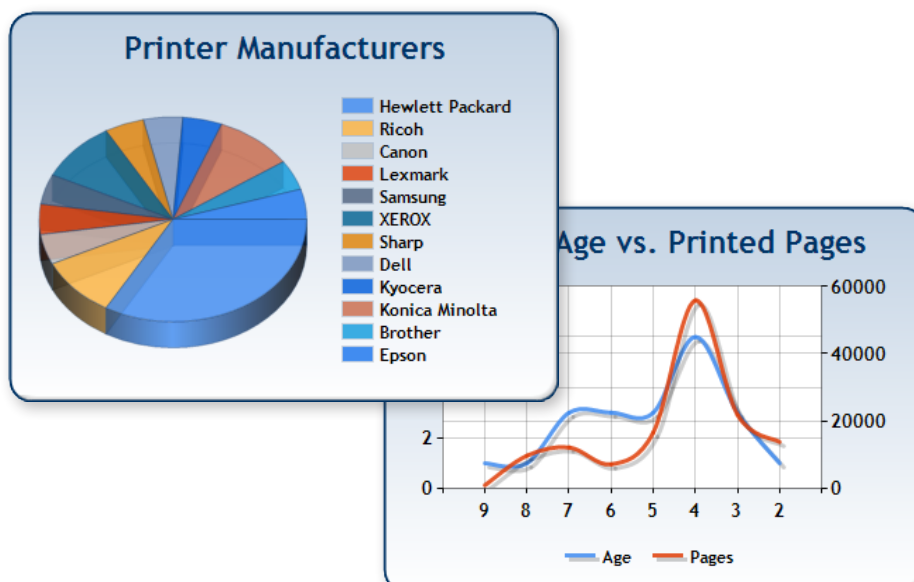
JetAdvice Manager helps you make smart decisions by delivering the right data, accurately and on time. Complete understanding of your print fleet is at your fingertips now! Simply the best on the market.

Make the right decisions with accurate, JetAdvice data..

- Complete, vendor-independent, data collection on all networked and non-networked devices - multiple times daily. Color and mono, job type and more.
- Automated supplies ordering based on real and projected use; customized by device or customer.
- Flexible maintenance alerts and error messaging with multiple filter capabilities to adapt to your environment.
- Estimates power consumption and perform usage modeling to easily understand. True costs - at a glance.
- Audit, assess, and analyze all monitored devices - networked and non-networked - automatically.
- Fully customizable data export integrates with ERP, CRM and other business software systems - automated or on-demand, in multiple formats.
- Integrates with customized solutions via web service.

Benefits

- Reduce manual entry errors for improved accuracy
- Save time and lower overhead costs
- Facilitate pay-per-use billing processes
- Balance device workloads
- Eliminate toner waste and unnecessary expenses
- Enable just-in-time supplies delivery
- Extend the life of devices
- Reduce maintenance calls
- Control replacement costs
- Place devices for workflow efficiency
- Curb CO₂ emissions
- Manage power costs
- Deliver accurate, comprehensive overviews - fast
- Use in any print environment
- Vendor-independent data collection
- Cost-effective, full control of your information



Learn more

Meter Reading

Monitor all your devices and the use of different device capabilities; paper size, color, duplex and more.

Supplies

Automate ordering of supplies to get the correct replacements and reduce inventories - just in time with less waste.

Maintenance

Simplify maintenance to keep fleet functioning properly while minimizing user frustration, and preventing expensive down time.

Environment and economy

Correctly place all devices for efficiency or find costly older or mis-used devices to reduce power consumption, boost productivity, and manage supplies.

Print Analysis

Know at a glance how all devices are used across your fleet, enabling fact-based decisions that simplify purchasing, planning and budgeting.

Reporting

Produce customized reports with timely, consistent overviews of color vs. mono use, supplies, firmware updates, and hundreds of other impactful data.

Individual Feature-sheets are available on above topics.

Technical Specifications

Agent installation

- Less than 10 minutes installation and configuration
- No need to modify any element of the infrastructure
- Updates automatically
- Unlimited load
- Secure transfer of data to server

Security

- No information is collected on the user or workstation
- Printing, MFD and other image devices analyzed
- Information is sent securely via FTP, HTTP or HTTPS
- Security document available

Network requirements

- Use SNMP

Device requirements

- Connected to network
- Active SNMP
- Powered on

JetAdvice API

- REST web service
- Integrate directly into your software
- Extract data on demand
- Bulk management
- Process Automation

Installation requirements

- Connected to network
- Windows 2000, XP, Vista or 7
- Microsoft.NET 2.0 installed

Collected data

- Manufacturer
- Model
- IP Address
- Serial number
- Part number
- Asset ID
- Meters
- Total cost including mono and color
- Color capability
- Duplex capability
- Laser functionality
- Device type (MFP, copier, etc.)
- Install date
- MAC address
- Device status
- Device alerts
- Toner levels (black, cyan, magenta and yellow)
- And much more

JetAdvice Manager Dashboard View



About EuroForm..

EuroForm A/S is an independent software development company, based in Denmark. We are committed to adding true value to customers through providing second-to-none solutions that

optimize and enhance the use of laser printers and multifunction devices. EuroForm A/S is one of the first printer software developers to offer innovative solutions in the cloud.

» EuroForm A/S
 Phone: +45 4466 8338
 sales@euroform.com
 www.euroform.com